

Sacramento, Calif.

# High Performance Solutions from High Performing People

Committed to delivering safe, reliable and efficient vehicles built in the United States

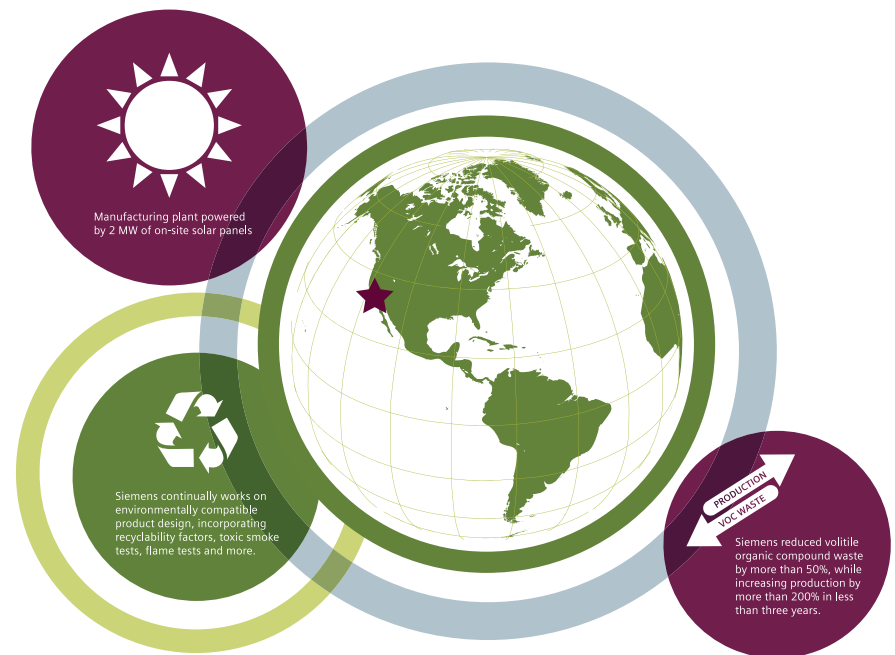
## Siemens is at the forefront of sustainable technology and green manufacturing.

Siemens' Sacramento, California rail manufacturing plant is a leader in providing rolling stock and related services. Its portfolio covers the full range of vehicles – from light rail vehicles to locomotives and street cars, all built right here in the United States at a manufacturing plant powered almost entirely by a 2 MW solar installation.

Siemens has expertise in the areas of local, long-distance, and logistical transport to offer comprehensive expertise for environmentally friendly, efficient and reliable rail vehicles. The company's Sacramento plant builds rolling stock from start to finish: design, engineering, car shells, wheel-sets, sub-assembly, final assembly and testing.

Currently, more than 800 people are employed at the 430,000-square-foot facility, on 60 acres of land. This includes 22-ready-to-build-acres for continued expansion. As the operation in Sacramento continues to grow, Siemens has the flexibility to produce a wider array of products to respond to America's rail renaissance.

With its comprehensive portfolio of vehicles, services and solutions built in the United States, Siemens is providing the solutions to keep America moving forward.



# Siemens has continually expanded the localization of its U.S. rolling stock manufacturing since 1980

1980

- 1980:** First U.S. order of light rail vehicles for San Diego
- 1983:** First local U.S. vehicle assembly for Buy America begins in Pittsburgh, Penn.
- 1984:** First Siemens local assembly established in Sacramento, Calif.

1990

- 1992-1995:** Siemens established permanent light rail facility in Sacramento for engineering, sub-assembly, vehicle assembly, and office space

2000

- 2006:** Expansion and in-sourcing of carshell manufacturing in Sacramento
- 2007:** Established first satellite vehicle assembly operation – Elmira, NY
- 2008:** Bogie and truck-frame manufacturing began at the Sacramento plant – completing the final aspect of complete vertical integration
- 2009:** Sacramento plant began operating mostly on solar power

2010

- 2010:** Purchased 20 acres adjacent to the plant for further expansion – possible high-speed rail center of excellence
- 2012:** Locomotive manufacturing upgrades completed at the Sacramento plant

More than 30 years,  
more than 1500 vehicles roll out the door



Light Rail

The market leader, Siemens has built more than 1000 light rail vehicles for 17 cities in the U.S. and Canada; one out of every three light rail vehicles in North America is a Siemens vehicle.



Streetcar

The resurgence of streetcars in the U.S. is led by the successful implementation of new streetcar lines operating the S70 Streetcar in Atlanta, Georgia and Salt Lake City, Utah.



Locomotives

70 new electric locomotives for Amtrak's Northeast corridor began revenue service in 2014. 35 high-performance diesel-electric locomotives will be 100% Buy America.



High-Speed Trainsets

The successful Velaro is currently operating in 9 countries worldwide and Siemens has already invested in 20 acres for a High-Speed Center of Excellence in California.