



## Opel/Vauxhall Movano

2.2 Diesel 120/140/165



**BRONZE 2022**

**SAFETY ASSIST  
PERFORMANCE**



**33%**

## SPECIFICATION

|                              |  |
|------------------------------|--|
| TESTED MODEL                 | Opel/Vauxhall Movano – 2.2 Diesel 120/140/165              |
| BODY TYPE / CATEGORY         | Monocoque / N1   |
| KERB / PAYLOAD / TEST WEIGHT | 2174 kg / 1326 kg / 2272 kg                                |
| APPLIES TO                   | 4 <sup>th</sup> generation (X250 platform) October 2021 on |

## SAFETY EQUIPMENT

| SAFETY ASSIST      | Driver | Passenger |
|--------------------|--------|-----------|
| Seat Belt reminder | ●      | ●         |

| ADVANCED DRIVER ASSISTANCE SYSTEMS (ON TESTED VARIANT) |   |
|--|---|
| AEB Car-to-Car   | ○ |
| AEB Pedestrian   | ✘ |
| AEB Cyclist  | ✘ |
| Lane Support Systems                                   | ○ |
| Speed Assist Systems                                   | ● |
| Attention Assist                                       | ✘ |

● STANDARD    ○ FITTED AS OPTION    ✘ NOT AVAILABLE

### Verdict

Since early autumn 2022, the Movano is based on the Stellantis large van platform, unlike the 2021 Renault-based vehicle. Disappointingly, the Movano does not get the safety-system improvements of the FIAT Ducato on which it is based. Nevertheless, it shares its specification with all of the other Stellantis products based on the same platform and this is enough to elevate it from 'Not Recommended' last year to a Bronze award this year.

For detailed comments see below.

**SAFETY ASSIST PERFORMANCE**

Total 33%

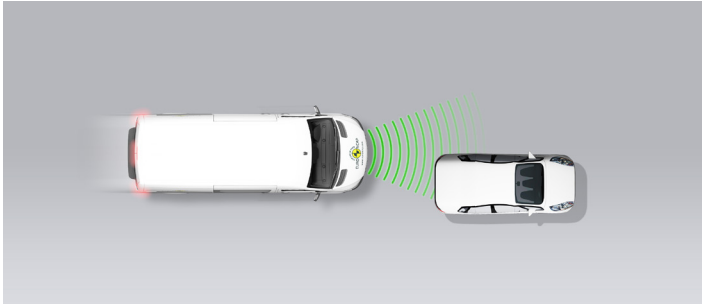
**AEB CAR-TO-CAR**

24.0 / 30 Pts

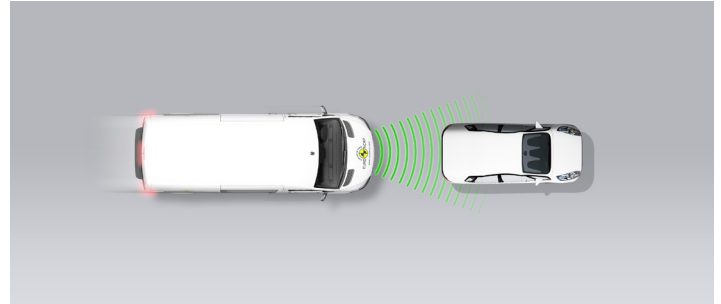
|                  |         |
|------------------|---------|
| Type             | AEB     |
| Operational From | 10 km/h |

**Autobrake function only**

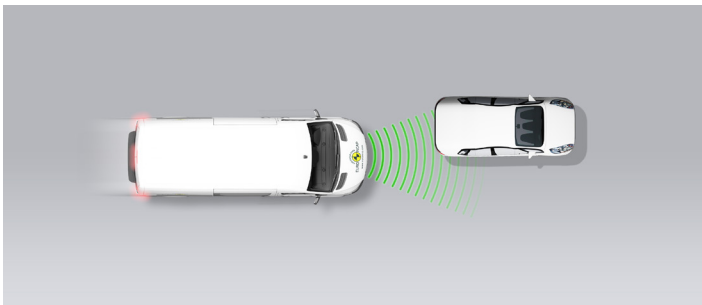
Approaching a stationary car



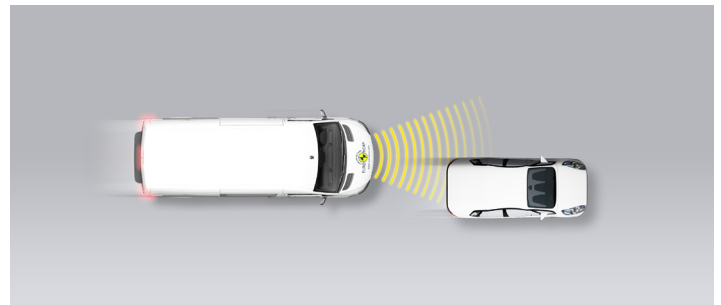
Approaching a stationary car



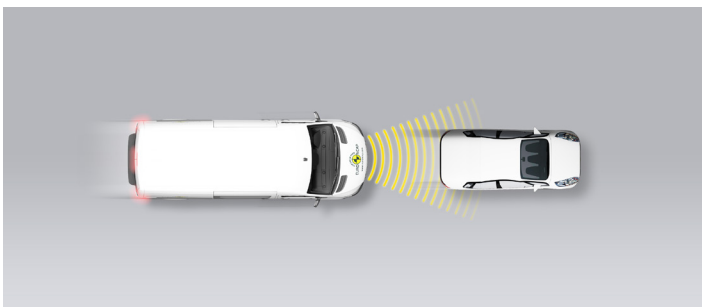
Approaching a stationary car



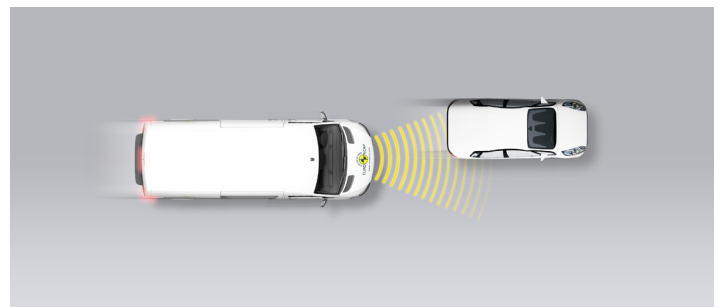
Approaching a slower moving car



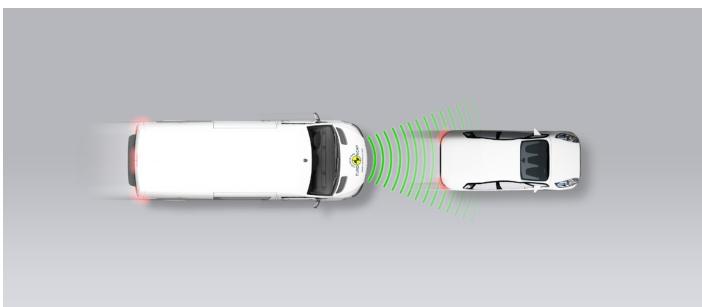
Approaching a slower moving car



Approaching a slower moving car



Approaching a braking car



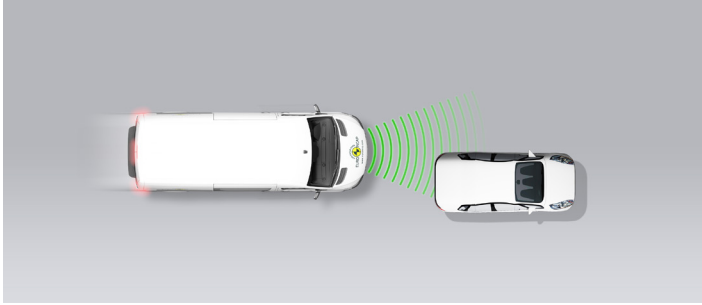
**GOOD**
 **ADEQUATE**
 **MARGINAL**
 **WEAK**
 **POOR**

**SAFETY ASSIST PERFORMANCE**

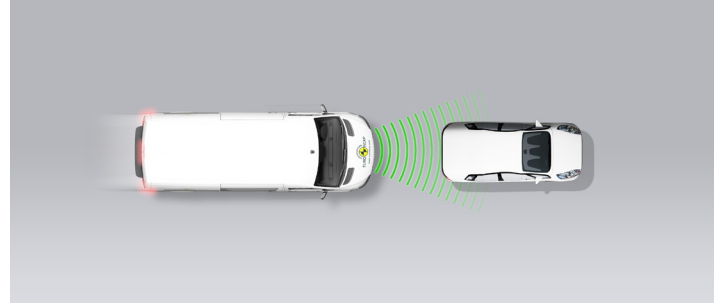
Total 33%

**Driver reacts to warning (Forward Collision Warning - FCW)**

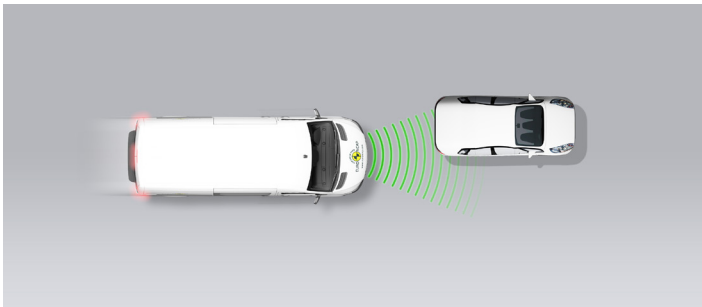
Approaching a stationary car



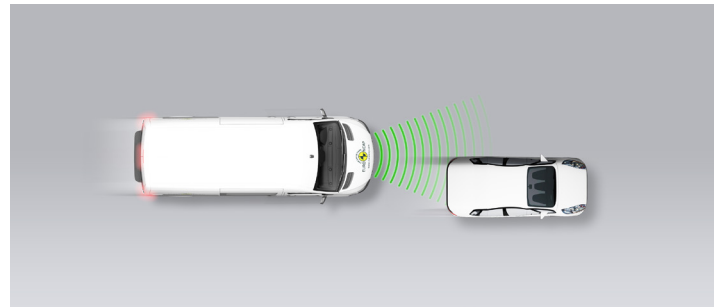
Approaching a stationary car



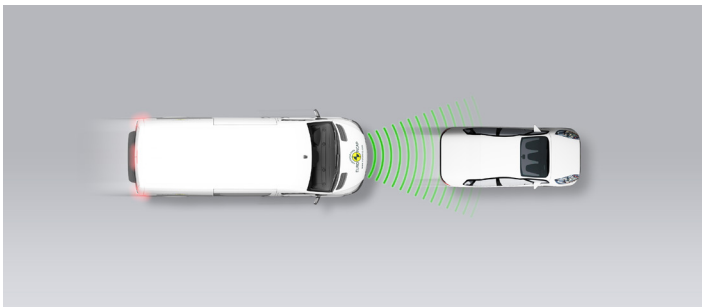
Approaching a stationary car



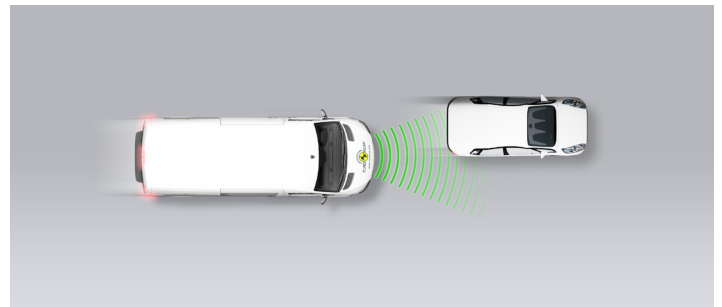
Approaching a slower moving car



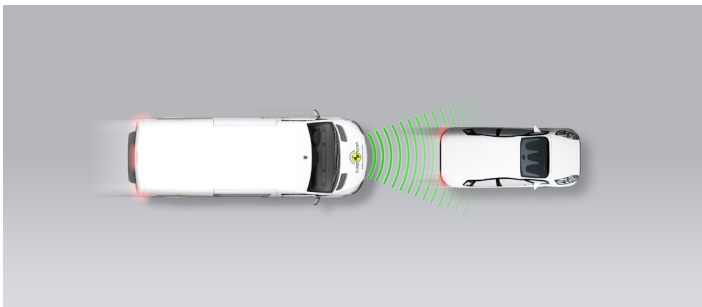
Approaching a slower moving car



Approaching a slower moving car



Approaching a braking car



|  |      |  |          |  |          |  |      |  |      |
|--|------|--|----------|--|----------|--|------|--|------|
|  | GOOD |  | ADEQUATE |  | MARGINAL |  | WEAK |  | POOR |
|--|------|--|----------|--|----------|--|------|--|------|

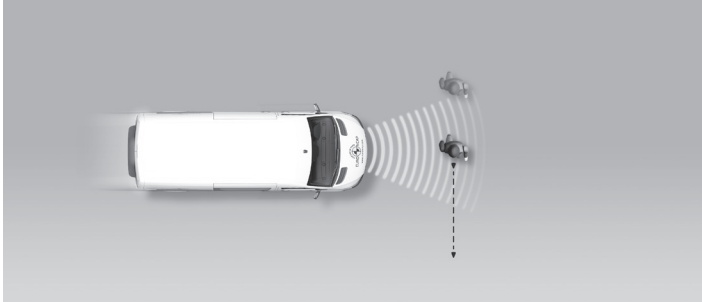
**SAFETY ASSIST PERFORMANCE**

Total 33%

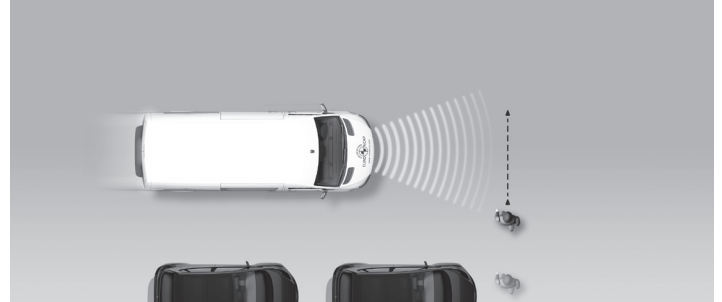
**AEB PEDESTRIAN**

N/A

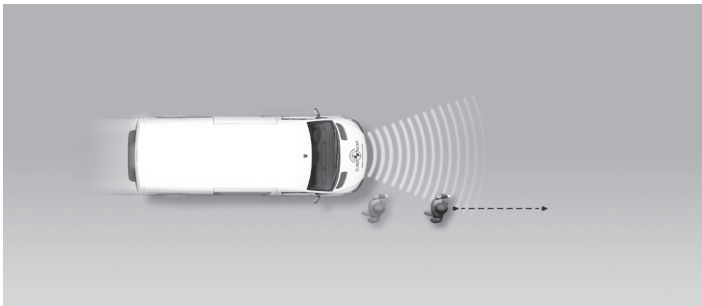
Adult crossing the road



Child running from behind parked vehicles



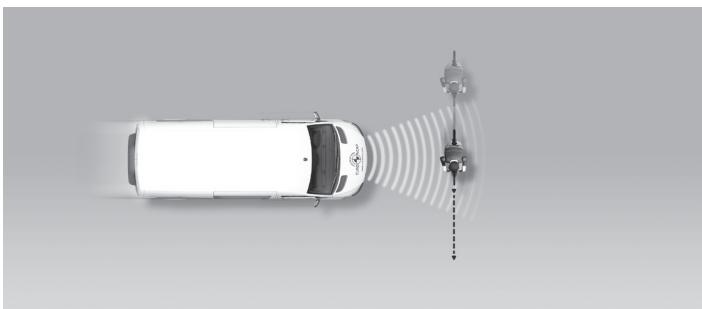
Adult along the roadside



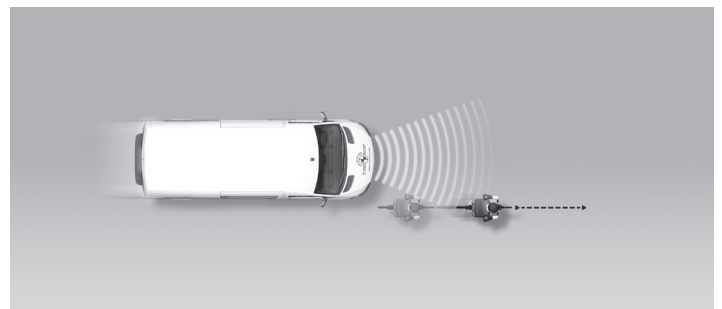
**AEB CYCLIST**

N/A

Cyclist crossing



Cyclist along the roadside



|  |             |  |                 |  |                 |  |             |  |             |
|--|-------------|--|-----------------|--|-----------------|--|-------------|--|-------------|
|  | <b>GOOD</b> |  | <b>ADEQUATE</b> |  | <b>MARGINAL</b> |  | <b>WEAK</b> |  | <b>POOR</b> |
|--|-------------|--|-----------------|--|-----------------|--|-------------|--|-------------|

**SAFETY ASSIST PERFORMANCE**

Total 33%

LANE SUPPORT

1.3 / 20 Pts

|   |            |
|---|------------|
| Type  | LDW & BLIS |
| Operational From                                      | 0 km/h     |
| <b>PERFORMANCE</b>                                    |            |
| Emergency Lane Keeping (ELK) / Lane Keep Assist (LKA) |            |
| Lane Departure Warning (LDW)                          |            |
| Blind Spot Information System (BLIS)                  |            |

SPEED ASSISTANCE

3.5 / 15 Pts

|                                  |              |
|----------------------------------|--------------|
| Speed Limit Information Function | Camera based |
| Speed Limitation Function        | Manually set |

OCCUPANT STATUS MONITORING

5.0 / 15 Pts

|                          |   |
|--------------------------|---|
| <b>DRIVER MONITORING</b> |   |
| Attention Assist Driver  | — |

| SEATBELT REMINDER | Driver Seat | Front Passenger |
|-------------------|-------------|-----------------|
| Visual Warning    |             |                 |
| Audible Warning   |             |                 |

PASS    FAIL    — NOT AVAILABLE

GOOD    ADEQUATE    MARGINAL    WEAK    POOR

 SAFETY ASSIST PERFORMANCE

Total 33%

## Comment

The van was tested with the optional autonomous emergency braking (AEB) system. In tests of the system's reaction to a vehicle in front, performance was good, with avoidance of collision against stationary targets and most slower-moving targets, albeit with a noticeable drop in performance at the higher test speeds. The AEB system does not react to vulnerable road users like pedestrians and cyclists.

The optional lane departure warning system offers a warning to the driver if the vehicle is drifting out of lane. However, the system reacts only to a full-marked lane (i.e. one which has lane markings on both sides) and this is insufficient to qualify for points in Euro NCAP's assessment. Lane keep assist, which gently steers the vehicle back into lane, is not available, although a blind-spot information system is offered as an option.

A camera-based speed-limit information system identifies the local limit using traffic-sign recognition and provides this information to the driver. However, the driver-set speed limiter did not maintain speed accurately enough to meet Euro NCAP's requirements and no points were scored. A seatbelt reminder is standard equipment for the driver's seat but is not available for the passenger seat.

|  |      |   |          |   |          |  |      |   |      |
|--|------|---|----------|---|----------|--|------|---|------|
|  | GOOD |  | ADEQUATE |  | MARGINAL |  | WEAK |  | POOR |
|--|------|---|----------|---|----------|--|------|---|------|

**FITMENT**

|                 | AUTONOMOUS EMERGENCY BRAKING SYSTEMS |                |             | LANE SUPPORT SYSTEMS                      |                        |                               | SPEED ASSIST SYSTEMS             |                           | OCCUPANT STATUS MONITORING SYSTEMS |                                |                  |
|-----------------|--------------------------------------|----------------|-------------|---|------------------------|-------------------------------|----------------------------------|---------------------------|------------------------------------|--------------------------------|------------------|
|                 | AEB Car-to-Car                       | AEB Pedestrian | AEB Cyclist | Emergency Lane Keeping / Lane Keep Assist | Lane Departure Warning | Blind Spot Information System | Speed Limit Information Function | Speed Limitation Function | Seat Belt Reminder - Driver        | Seat Belt Reminder - Passenger | Attention Assist |
| Austria         | ○                                    | ✘              | ✘           | ✘   | ○                      | ○                             | ○                                | ●                         | ●                                  | ●                              | ✘                |
| Belgium         | ○                                    | ✘              | ✘           | ✘   | ○                      | ○                             | ○                                | ●                         | ●                                  | ●                              | ✘                |
| Bulgaria        | ○                                    | ✘              | ✘           | ✘   | ○                      | ○                             | ○                                | ●                         | ●                                  | ●                              | ✘                |
| Croatia         | ○                                    | ✘              | ✘           | ✘   | ○                      | ○                             | ○                                | ●                         | ●                                  | ●                              | ✘                |
| Cyprus          | ○                                    | ✘              | ✘           | ✘   | ○                      | ○                             | ○                                | ●                         | ●                                  | ●                              | ✘                |
| Czech Republic  | ○                                    | ✘              | ✘           | ✘   | ○                      | ○                             | ○                                | ●                         | ●                                  | ●                              | ✘                |
| Denmark         | ○                                    | ✘              | ✘           | ✘   | ○                      | ○                             | ○                                | ●                         | ●                                  | ●                              | ✘                |
| Estonia         | ○                                    | ✘              | ✘           | ✘   | ○                      | ○                             | ○                                | ●                         | ●                                  | ●                              | ✘                |
| Finland         | ○                                    | ✘              | ✘           | ✘   | ○                      | ○                             | ○                                | ●                         | ●                                  | ●                              | ✘                |
| France          | ○                                    | ✘              | ✘           | ✘   | ○                      | ○                             | ○                                | ●                         | ●                                  | ●                              | ✘                |
| Germany         | ○                                    | ✘              | ✘           | ✘   | ○                      | ○                             | ○                                | ●                         | ●                                  | ●                              | ✘                |
| Greece          | ○                                    | ✘              | ✘           | ✘   | ○                      | ○                             | ○                                | ●                         | ●                                  | ●                              | ✘                |
| Hungary         | ○                                    | ✘              | ✘           | ✘   | ○                      | ○                             | ○                                | ●                         | ●                                  | ●                              | ✘                |
| Ireland         | ○                                    | ✘              | ✘           | ✘   | ○                      | ○                             | ○                                | ●                         | ●                                  | ●                              | ✘                |
| Italy           | ○                                    | ✘              | ✘           | ✘   | ○                      | ○                             | ○                                | ●                         | ●                                  | ●                              | ✘                |
| Latvia          | ○                                    | ✘              | ✘           | ✘   | ○                      | ○                             | ○                                | ●                         | ●                                  | ●                              | ✘                |
| Lithuania       | ○                                    | ✘              | ✘           | ✘   | ○                      | ○                             | ○                                | ●                         | ●                                  | ●                              | ✘                |
| Luxembourg      | ○                                    | ✘              | ✘           | ✘   | ○                      | ○                             | ○                                | ●                         | ●                                  | ●                              | ✘                |
| Malta           | ○                                    | ✘              | ✘           | ✘   | ○                      | ○                             | ○                                | ●                         | ●                                  | ●                              | ✘                |
| The Netherlands | ○                                    | ✘              | ✘           | ✘   | ○                      | ○                             | ○                                | ●                         | ●                                  | ●                              | ✘                |
| Poland          | ○                                    | ✘              | ✘           | ✘   | ○                      | ○                             | ○                                | ●                         | ●                                  | ●                              | ✘                |
| Portugal        | ○                                    | ✘              | ✘           | ✘   | ○                      | ○                             | ○                                | ●                         | ●                                  | ●                              | ✘                |
| Romania         | ○                                    | ✘              | ✘           | ✘   | ○                      | ○                             | ○                                | ●                         | ●                                  | ●                              | ✘                |
| Slovakia        | ○                                    | ✘              | ✘           | ✘   | ○                      | ○                             | ○                                | ●                         | ●                                  | ●                              | ✘                |
| Slovenia        | ○                                    | ✘              | ✘           | ✘   | ○                      | ○                             | ○                                | ●                         | ●                                  | ●                              | ✘                |
| Spain           | ○                                    | ✘              | ✘           | ✘   | ○                      | ○                             | ○                                | ●                         | ●                                  | ●                              | ✘                |
| Sweden          | ○                                    | ✘              | ✘           | ✘   | ○                      | ○                             | ○                                | ●                         | ●                                  | ●                              | ✘                |
| United Kingdom  | ○                                    | ✘              | ✘           | ✘   | ○                      | ○                             | ○                                | ●                         | ●                                  | ●                              | ✘                |

For latest fitment info for your market, check our [website](#).

● STANDARD    ○ FITTED AS OPTION    ✘ NOT AVAILABLE    — VEHICLE NOT SOLD