

## Kia Sorento

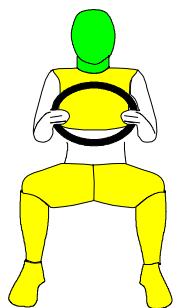


**2009**

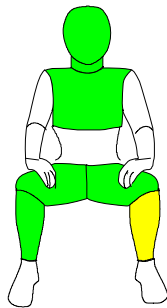
	Adult Occupant	Child Occupant	Pedestrian	Safety Assist	
Score	31.184	41.000	15.900	5.000	
Max Points available	36	49	36	7	
Normalised Score (%)	<b>87</b>	<b>84</b>	<b>44</b>	<b>71</b>	
Weighting (%)	50	20	20	10	TOTAL
Weighted Percentage Score	43.5	16.8	8.8	7.1	<b>76</b>

### Rating Requirements (2009)

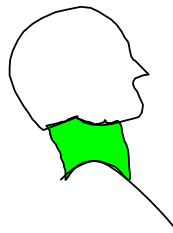
	Normalised Score (%)				TOTAL
★★★★★	75	70	25	60	70
★★★★	60	55	15	40	55
★★★	30	30	10	25	45
★★	25	25	5	15	35
★	15	15	0	5	20



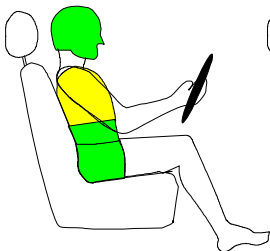
Driver



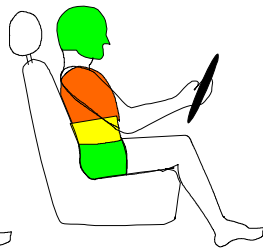
Passenger



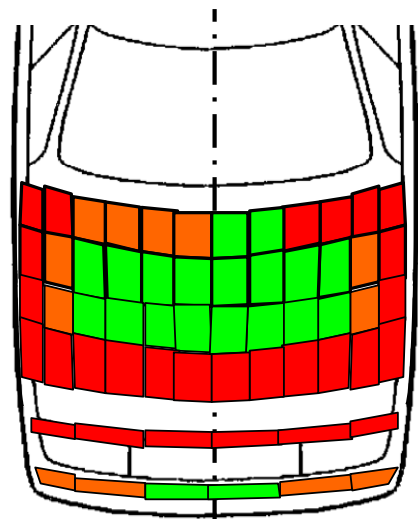
Rear Impact (Whiplash)



Side



Pole



TEST RESULTS IN FULL	
<b>FRONTAL IMPACT HEAD</b>	
Driver airbag contact	stable
Passenger airbag contact	stable
<b>Steering Wheel</b>	
rearward displacement	none
upward displacement	none
lateral displacement	17mm to the left
<b>FRONTAL IMPACT CHEST</b>	
Contact with steering wheel	none
Screen pillar rearward	9mm
Passenger compartment integrity	stable
<b>FRONTAL IMPACT UPPER LEGS, KNEES AND PELVIS</b>	
Stiffer structures present	yes: steering column and ignition barrel
Concentrated knee loading	none
<b>FRONTAL IMPACT LOWER LEGS, FEET AND ANKLES</b>	
Rearward pedal displacement	brake - 77mm
Upward pedal displacement	brake - 8mm
Footwell rupture	none
<b>SIDE IMPACT AIRBAGS</b>	
Head protection airbag	yes
Torso protection airbag	yes
<b>CHILD PROTECTION</b>	
Restraints used	
18 month old	Fair G 0/1 ISOFIX, rearward facing using ISOFIX anchorages and support frame
3 year old	Fair G 0/1 ISOFIX, forward facing using ISOFIX anchorages and support frame
<b>CHILD RESTRAINTS FRONTAL IMPACT</b>	
Airbag disabling/warning label	Text and pictogram warning label permanently attached to both sides of the passenger sun visor
Forward head movement	
18 mth old (behind passenger)	protected
3 year old (behind driver)	protected
Chest Protection	
18 mth old: total load	good
vertical load	good
3-year-old: total load	good
vertical load	good
<b>CHILD RESTRAINTS SIDE IMPACT</b>	
Head protection	
18 mth old (struck side)	protected
3 year old (non-struck side)	protected
Head acceleration	
18 mth old	good
3 year old	good



<b>Make, model and hand of drive</b>	Kia Sorento 2.2 diesel GLS (EX), LHD
<b>Body type</b>	5 door SUV
<b>Year tested</b>	2009
<b>Kerb weight</b>	1870kg
<b>Chassis number from which Euro NCAP rating applies</b>	applies to all Sorentos of the specification tested
<b>Safety Equipment</b>	Driver and passenger single stage frontal airbags; side impact chest airbag; side impact head airbag; front and rear seatbelt pretensioners (double pretensioners in front seats) and load limiters; ISOFIX and top-tether anchorages in rear outboard seats; top-tether anchorage in rear centre seat; anti-whiplash head restraints; electronic stability control; driver and front passenger seatbelt reminder system.



## COMMENTS

<b>ADULT OCCUPANT</b>	The passenger compartment remained stable in the frontal impact. Double pretensioners ensured that the dummies' knees were kept away from the dashboard, and low readings were recorded. However the steering column and ignition barrel were thought to present a potential risk of injury to drivers of different sizes. The chest lost a fraction of a point in the side barrier impact. In the more severe side pole test, rib deflections indicated marginal protection of the chest. Protection of the neck against whiplash injuries was good.
<b>CHILD PROTECTION</b>	Based on dummy readings in the frontal and side barrier tests, the Sorento scored maximum points for protection of both the 3 year old and the 1½ year old infants. The heads of both dummies were properly contained by the restraints in the side barrier impact. The passenger airbag can be deactivated to allow a rearward facing child restraint to be used in that seating position. However, information provided to the driver regarding the status of the airbag is not sufficiently clear.
<b>PEDESTRIAN PROTECTION</b>	The protection provided by the front edge of the bonnet to pedestrians' legs is poor. The protection offered by most of the the bumper was rated as marginal, although some points towards the centre of the car performed well. In most areas likely to be struck by the head of a child, the bonnet offered poor protection. For adult, the bonnet offered good protection towards the centre but was rated as poor along the edges, where it is supported by stiff structures.
<b>SAFETY ASSIST</b>	Electronic stability control (ESC) is standard equipment on all Sorento variants. The car also has a standard-fit seatbelt reminder system for the driver and front seat passenger.

**Euro NCAP's rating applies fully only to the model with the specifications detailed here. Some equipment may not be fitted as standard to all versions in all countries. You should ensure that your car is fitted with the safety equipment you require.**



[www.euroncap.com](http://www.euroncap.com)

EUROPEAN NEW CAR  
ASSESSMENT PROGRAMME