

## PRESS ROOM

Search

PRESS RELEASES

IMAGES

CONTACT US

Print (#)

Send (#)

OTHER ACTIVITIES | THE BUILDING | [EXHIBITIONS](#)

IMAGES

Tweet 0

0

Like 0

11 October, 2013

## Garmendia, Maneros Zabala, Salaberria. Process and Method

**Iñaki Garmendia***Blow After Blow (Kolpez kolpe)*, 2003

Single-channel video installation, color, with sound, 24 min.

Museo San Telmo

[Descargar imagen \(http://prensa.guggenheim-bilbao.es/src/uploads/2013/10/KolpezKolpe\\_1.tif.zip\)](http://prensa.guggenheim-bilbao.es/src/uploads/2013/10/KolpezKolpe_1.tif.zip)**Iñaki Garmendia***Untitled Orbea (Orduña)*, 2007

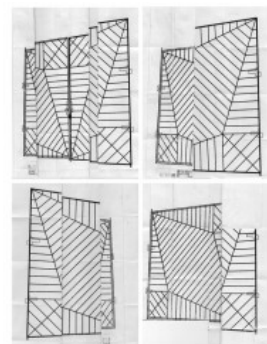
Single-channel, Betacam SP video transferred to digital format, 42 min

Courtesy the artist

[Descargar imagen \(http://prensa.guggenheim-bilbao.es/src/uploads/2013/10/Orbea\\_monitor-1.tif.zip\)](http://prensa.guggenheim-bilbao.es/src/uploads/2013/10/Orbea_monitor-1.tif.zip)**Iñaki Garmendia***Untitled (Six Peaks) (Sin título [seis picos])*, 2011

Modular MDF construction, with loudspeakers 147 x 36 cm

Artium, Vitoria-Gasteiz

[Descargar imagen \(http://prensa.guggenheim-bilbao.es/src/uploads/2013/10/11-24-1.tif.zip\)](http://prensa.guggenheim-bilbao.es/src/uploads/2013/10/11-24-1.tif.zip)**Iñaki Garmendia***Untitled (Fence) (Sin título [verja])*, 2011

Plans

3 works: 97 x 67 cm each

Courtesy the artist and Galería Moisés Pérez de Albéniz

[Descargar imagen \(http://prensa.guggenheim-bilbao.es/src/uploads/2013/10/VERJAS\\_SERIE.tif.zip\)](http://prensa.guggenheim-bilbao.es/src/uploads/2013/10/VERJAS_SERIE.tif.zip)

## DOWNLOAD IMAGES

In this section you will find high resolution images featuring the Museum exhibitions, the building etc.

[Download](#)[\(http://prensa.guggenheim-bilbao.es/en/categoria/imagenes/\)](http://prensa.guggenheim-bilbao.es/en/categoria/imagenes/)| [Exit](#) [\(http://prensa.guggenheim-bilbao.es/core/wp-login.php?action=logout&wpnonce=a4a8f05\)](http://prensa.guggenheim-bilbao.es/core/wp-login.php?action=logout&wpnonce=a4a8f05)

## FOLLOW US ON

Sign up for our alerts service and receive the latest about the Museum by e-mail.

e-mail

SEND

I have read and agree to the terms and conditions of the [Legal Information and Data Protection Policy notices.](#)

[\(http://www.guggenheim-bilbao.es/en/legal-information/\)](http://www.guggenheim-bilbao.es/en/legal-information/)



**Iñaki Garmendia**

*Ikaraundi – EQDALOS (Head Kneeling Against the Wall) (Ikaraundi-EQDALOS [burua paretan kontra belaunikatuta]), 2013*

Paper, metal, MDF, wood, and projection  
Site-specific dimensions  
Guggenheim Bilbao Museoa

[Descargar imagen \( http://prensa.guggenheim-bilbao.es/src/uploads/2013/10/Modelado\\_Sarriegui-1.tif.zip\)](http://prensa.guggenheim-bilbao.es/src/uploads/2013/10/Modelado_Sarriegui-1.tif.zip)



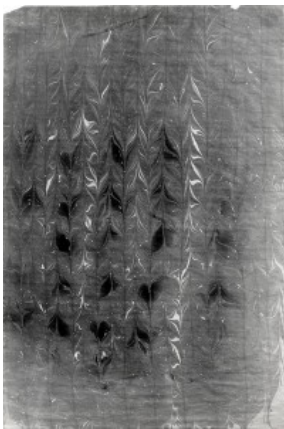
**Erlea Maneros Zabala**

*Untitled, Thursday, November 1st, 2001, Los Angeles Times (study 20), 2005*

Watercolor on vellum  
50.8 x 66 cm

Redling Fine Arts, Los Angeles

[Descargar imagen \(http://prensa.guggenheim-bilbao.es/src/uploads/2013/10/EMZ07008.tif1.zip\)](http://prensa.guggenheim-bilbao.es/src/uploads/2013/10/EMZ07008.tif1.zip)



**Erlea Maneros Zabala**

*Exercises on Abstraction (Series II), 2009–10*

India ink on offset paper  
91,4 x 61 cm

Courtesy Carreras Múgica, Bilbao

[Descargar imagen \( http://prensa.guggenheim-bilbao.es/src/uploads/2013/10/EMZ10012-1.tif.zip\)](http://prensa.guggenheim-bilbao.es/src/uploads/2013/10/EMZ10012-1.tif.zip)



**Erlea Maneros Zabala**

*Los Angeles, May 14th, 2009, 2009/13*

80-slide projection  
Redling Fine Arts, Los Angeles

[Descargar imagen \( http://prensa.guggenheim-bilbao.es/src/uploads/2013/10/EMZ09019.tif.zip\)](http://prensa.guggenheim-bilbao.es/src/uploads/2013/10/EMZ09019.tif.zip)



**Erlea Maneros Zabala**

View of the installation: *Untitled (Orientalist Studies), Manifesta 8, Murcia and Cartagena, 2010–11*

Museum board, Gatorfoam board, Perspex, C-print of a pencil drawing, newspaper collage, and aluminum

10 works: 81,3 x 33 x 114,3 cm each  
Redling Fine Arts, Los Angeles

[Descargar imagen \(http://prensa.guggenheim-bilbao.es/src/uploads/2013/10/EMZ\\_Manifesta8\\_2.tif.zip\)](http://prensa.guggenheim-bilbao.es/src/uploads/2013/10/EMZ_Manifesta8_2.tif.zip)

I agree to being sent information about activities, services, and products offered by the Guggenheim Museum Bilbao.

Sign up for our RSS feed (<http://prensa.guggenheim-bilbao.es/en/feed/>)



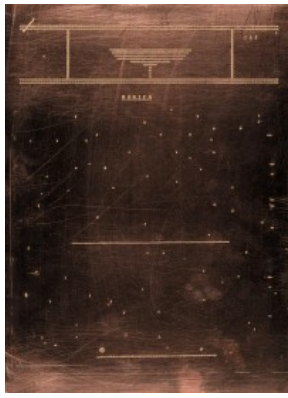
(<http://http://facebook.com/MuseoBilbao>)

## CONTACT US

For special requests for information, interviews, etc., please contact the Museum Department of Communications

Phone: (+34) 94 435 90 08  
(tel:+34944359008)

E-mail: [media@guggenheim-bilbao.es](mailto:media@guggenheim-bilbao.es)  
(<mailto:media@guggenheim-bilbao.es>)



**Erlea Maneros Zabala**

*Basque Graphics; Typography and Ornament: 1961–1967 (Grafía Vasca; tipografía y ornamentación: 1961–1967)*, 2013

Etching on copper plate  
39 sheets: 42 x 30 cm each  
Guggenheim Bilbao Museoa

[Descargar imagen \(http://prensa.guggenheim-bilbao.es/src/uploads/2013/10/catalogue-EMZSketch4.tif.zip\)](http://prensa.guggenheim-bilbao.es/src/uploads/2013/10/catalogue-EMZSketch4.tif.zip)



**Xabier Salaberria**

*Part II of an Unbuilt Project*, 2007

Pine plywood and lag screws  
190 x 500 x 40 cm  
Courtesy Carreras Múgica, Bilbao

[Descargar imagen \(http://prensa.guggenheim-bilbao.es/src/uploads/2013/10/PART-II-OF-U.P1.tif.zip\)](http://prensa.guggenheim-bilbao.es/src/uploads/2013/10/PART-II-OF-U.P1.tif.zip)



**Xabier Salaberria**

*Cold Front*, 2008/13

Digital print, photographs, wood, metal, and paint  
Dimensions variable  
Courtesy Carreras Múgica, Bilbao

[Descargar imagen \(http://prensa.guggenheim-bilbao.es/src/uploads/2013/10/UTURNDK.tif.zip\)](http://prensa.guggenheim-bilbao.es/src/uploads/2013/10/UTURNDK.tif.zip)



**Xabier Salaberria**

*Debate*, 2009

Painted cast iron and marble  
Dimensions variable  
Colección MACBA, Fundación MACBA,  
Fundación Repsol

[Descargar imagen \(http://prensa.guggenheim-bilbao.es/src/uploads/2013/10/debateBAI.tif.zip\)](http://prensa.guggenheim-bilbao.es/src/uploads/2013/10/debateBAI.tif.zip)

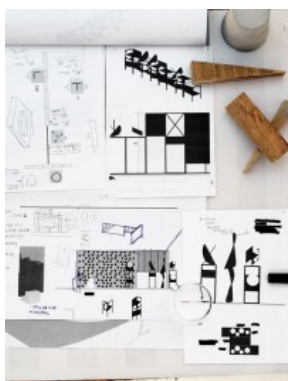


**Xabier Salaberria**

*Untitled*, 2011 (from the series *Unconscious/Conscious [Inkontziente/kontziente]*, 2011–13)

Cement, iron, and paint  
104 x 85 x 85 cm  
Courtesy Carreras Múgica, Bilbao

[Descargar imagen \(http://prensa.guggenheim-bilbao.es/src/uploads/2013/10/BAI-sin-silu.tif.zip\)](http://prensa.guggenheim-bilbao.es/src/uploads/2013/10/BAI-sin-silu.tif.zip)



**Xabier Salaberria**

*A.T.M.O.T.W.*, 2013

Metal, folded metal sheet, glass, paint, and concrete  
Dimensions variable  
Guggenheim Bilbao Museoa

[Descargar imagen \(http://prensa.guggenheim-bilbao.es/src/uploads/2013/10/IMG\\_3050.tif.zip\)](http://prensa.guggenheim-bilbao.es/src/uploads/2013/10/IMG_3050.tif.zip)

© FMGB Guggenheim Bilbao Museoa, 2013

**Phone:** [34 944 35 90 00](tel:34944359000)

Avenida Abandoibarra, 2 48009 Bilbao  
**E-mail:** [informacion@guggenheim-bilbao.es](mailto:informacion@guggenheim-bilbao.es)

[Legal Information](#) [Accessibility](#)