



Tuberous Sclerosis Complex (TSC) Patient Journey

What is TSC?

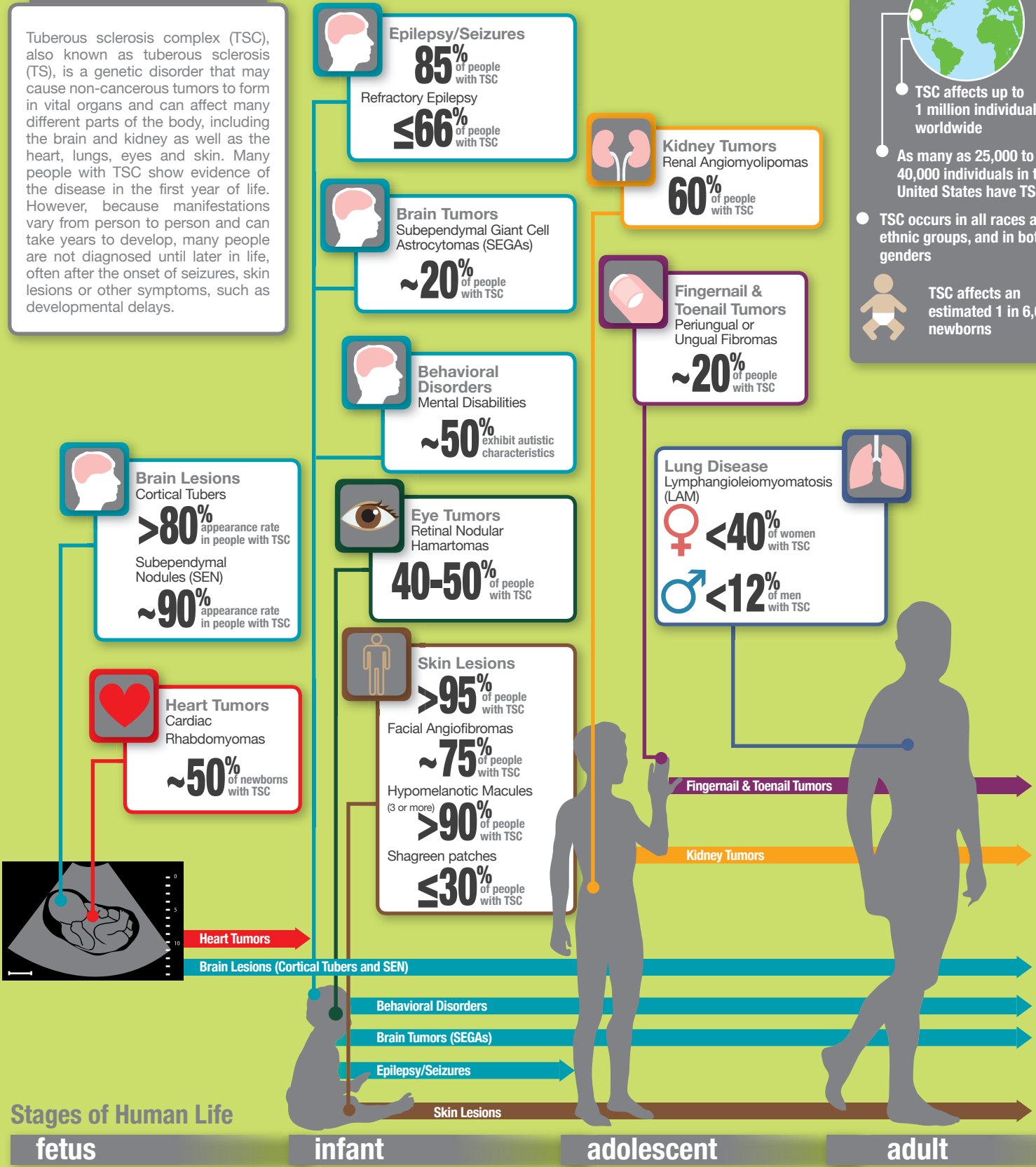
Tuberous sclerosis complex (TSC), also known as tuberous sclerosis (TS), is a genetic disorder that may cause non-cancerous tumors to form in vital organs and can affect many different parts of the body, including the brain and kidney as well as the heart, lungs, eyes and skin. Many people with TSC show evidence of the disease in the first year of life. However, because manifestations vary from person to person and can take years to develop, many people are not diagnosed until later in life, often after the onset of seizures, skin lesions or other symptoms, such as developmental delays.



- TSC affects up to 1 million individuals worldwide
- As many as 25,000 to 40,000 individuals in the United States have TSC
- TSC occurs in all races and ethnic groups, and in both genders



TSC affects an estimated 1 in 6,000 newborns



Stages of Human Life

fetus

infant

adolescent

adult



Novartis Pharma AG
CH-4002 Basel Switzerland

© Novartis 2015

February 2015

G-AFI-1107686

Novartis Pharmaceuticals Corporation
East Hanover, New Jersey 07936-1080

Note: Manifestations are included above at the point during human development when the manifestation is known to first occur in a patient. Horizontal arrows indicate the stages of life during which a manifestation is known to occur. Additionally, the above statistics are taken from multiple studies and sources.