

# COPD UNCOVERED

## THE IMPACT OF COPD ON A WORKING-AGE POPULATION

**COPD:**  
Chronic Obstructive Pulmonary Disease

**COPD Uncovered** is driven by a multidisciplinary committee of international respiratory health experts, supported by global charity Education for Health and Novartis Pharma AG<sup>6</sup>

1. Fletcher MJ, et al. COPD Uncovered: An International survey on the impact of chronic obstructive pulmonary disease (COPD) on a working age population. *BMC Public Health* 2011;11:612.

2. Murray, J.L. et al (1996). *The Global Burden of Disease*. 2nd ed. United States of America: The Harvard School of Public Health. 361.

3. Joshi M et al. Symptom burden in chronic obstructive pulmonary disease and cancer. *Obstructive, occupational and environmental diseases*. 2012;18(2).

4. Global Alliance Against Chronic Respiratory Diseases (GARD). Global surveillance, prevention and control of chronic respiratory diseases: a comprehensive approach. Available at: <http://www.who.int/gard/publications/GARD%20Book%202007.pdf>. Last accessed 29 August 2013.

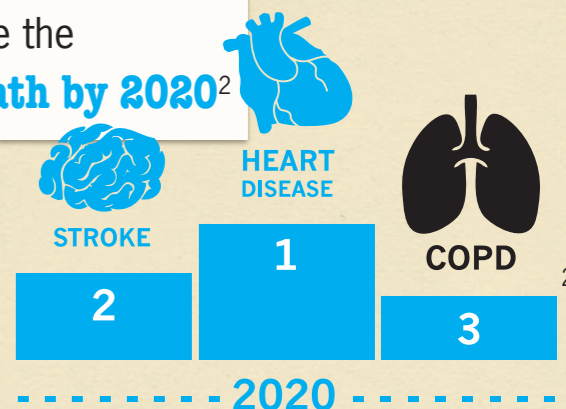
5. Global Initiative for Chronic Obstructive Lung Disease (GOLD). Global Strategy for the Diagnosis, Management, and Prevention of Chronic Obstructive Pulmonary Disease. Updated 2013. <http://www.goldcopd.org/guidelines-global-strategy-for-diagnosis-management.html>. Last accessed 29 August 2013.

6. Quotation from COPD Uncovered Steering Committee. Document available at: [http://www.educationforhealth.org/data/files/COPD\\_report\\_sept11.pdf](http://www.educationforhealth.org/data/files/COPD_report_sept11.pdf). Last accessed 29 August 2013.

**COPD** is a progressive, life-threatening disease that makes it hard to breathe, with symptoms that have a detrimental impact on patients' function and quality of life (QoL)<sup>3</sup>

**210 million** people estimated to have COPD worldwide in 2000<sup>4</sup>

**COPD** poses a major threat to society and is projected to be the **third leading cause of death by 2020**<sup>2</sup>



**Smoking** is the main risk factor for COPD<sup>4</sup>

**1** Need for improved awareness and measures among health authorities, payors and healthcare professionals to ensure COPD patients are diagnosed early and managed effectively to stay active and productive in society<sup>6</sup>

**COPD Uncovered** illustrates the urgent need for action to combat this growing problem<sup>6</sup>

**4** Need for governments to address the COPD epidemic by developing national strategies to strive for improved outcomes for patients and to minimize economic burden of COPD to societies<sup>6</sup>

**2** Need for approaches that focus on improving wellbeing and enable working COPD patients to continue with employment<sup>6</sup>

Need for early pharmacological and non-pharmacological interventions<sup>6</sup>, including:

- Smoking cessation<sup>6</sup>
- Pulmonary rehabilitation<sup>6</sup>
- Appropriate treatments that may keep individuals in employment for longer<sup>6</sup>

### COPD UNCOVERED

is an ongoing research and educational initiative to investigate the economic, social, physical and emotional impact of COPD in people aged **45-67 years**<sup>1</sup>

More than half of diagnosed COPD patients are under 65 years of age, at the prime of their lives and the peak of their earning power<sup>1</sup>

**44%** of those employed worry about their future ability to earn an income as a consequence of their COPD<sup>1</sup>

**COPD** seriously affects the ability of working-age patients to contribute to society<sup>1</sup>

**COPD** is a major economic burden for countries throughout the world<sup>1,5</sup>

**\$316,000** (£200,000)

Estimated individual lifetime income losses due to retiring prematurely<sup>1</sup>

**€38.6 billion**

COPD direct healthcare costs in the European Union, representing more than half of total spending on all respiratory diseases<sup>5</sup>

**COPD** can cause patients to experience a reduced QoL, difficulties undertaking daily activities and problems maintaining their previous lifestyle<sup>1,3,5</sup>

COPD symptoms, exacerbations and co-morbidities place a major burden on patients and significantly reduce QoL<sup>3,5</sup>

**20%-40%** of people with COPD retire prematurely due to their disease<sup>1</sup>

**54-years-old** average age of retirement (which is 11 years early in many countries)<sup>1</sup>

More than a third of patients report their total income has decreased as a consequence of their COPD<sup>1</sup>

**80%** of these indicate this has a negative effect on their lifestyle<sup>1</sup>