

EUROPEAN NEW CAR
 ASSESSMENT PROGRAMME
PEUGEOT 3008

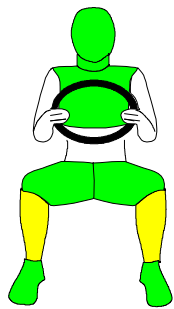


2009

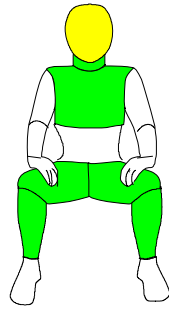
	Adult Occupant	Child Occupant	Pedestrian	Safety Assist	
Score	30.960	39.764	11.134	6.800	
Max Points available	36	49	36	7	
Normalised Score (%)	86	81	31	97	
Weighting (%)	50	20	20	10	TOTAL
Weighted Percentage S	43.0	16.2	6.2	9.7	75

Rating Requirements (2009)

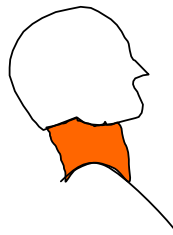
	Normalised Score (%)				TOTAL
★★★★★	75	70	25	60	70
★★★★	60	55	15	40	55
★★★	30	30	10	25	45
★★	25	25	5	15	35
★	15	15	0	5	20



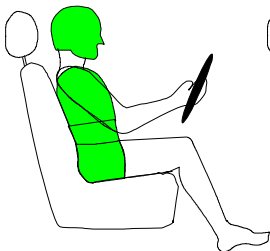
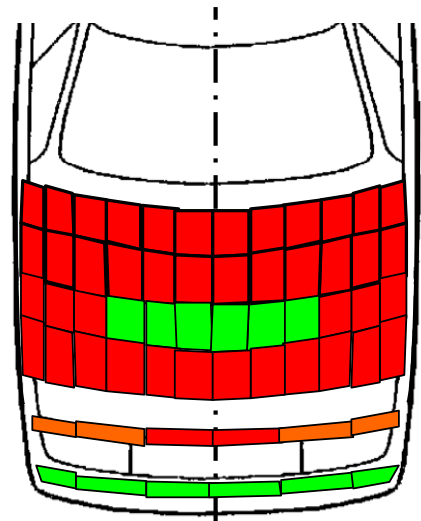
Driver



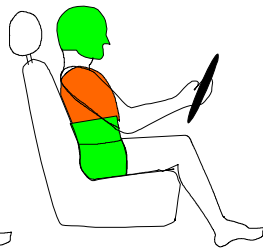
Passenger



Rear Impact (Whiplash)

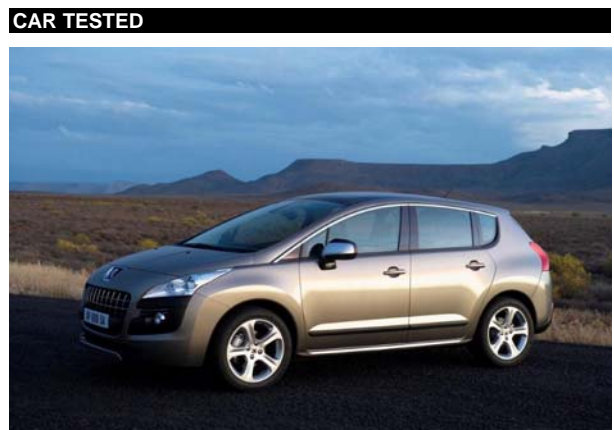


Side



Pole

TEST RESULTS IN FULL	
FRONTAL IMPACT HEAD	
Driver airbag contact	stable
Passenger airbag contact	airbag torn on deployment
Steering Wheel	
rearward displacement	none
upward displacement	none
lateral displacement	none
FRONTAL IMPACT CHEST	
Contact with steering wheel	none
Screen pillar rearward	7mm
Passenger compartment integrity	stable
FRONTAL IMPACT UPPER LEGS, KNEES AND PELVIS	
Stiffer structures present	none
Concentrated knee loading	none
FRONTAL IMPACT LOWER LEGS, FEET AND ANKLES	
Rearward pedal displacement	clutch - 47mm
Upward pedal displacement	clutch - 19mm
Footwell rupture	none
SIDE IMPACT AIRBAGS	
Head protection airbag	yes
Torso protection airbag	yes
CHILD PROTECTION	
Restraints used	
18 month old	Britax Römer Baby Safe Plus, rearward-facing using adult seatbelt
3 year old	Britax Römer Duo Plus, forward-facing using ISOFIX anchorages and top-tether
CHILD RESTRAINTS FRONTAL IMPACT	
Airbag disabling/warning label	Text and pictogram warning label, permanently attached to both sides of the passenger sun visor
Forward head movement	
18 mth old (behind passenger)	protected
3 year old (behind driver)	protected
Chest Protection	
18 mth old: total load	good
vertical load	good
3-year-old: total load	fair
vertical load	good
CHILD RESTRAINTS SIDE IMPACT	
Head protection	
18 mth old (struck side)	protected
3 year old (non-struck side)	protected
Head acceleration	
18 mth old	good
3 year old	good



Make, model and hand of drive	Peugeot 3008 1.6HDi, LHD
Body type	5 door hatchback
Year tested	2009
Kerb weight	1425kg
Chassis number from which Euro NCAP rating applies	applies to all 3008s
Safety Equipment	Driver and passenger single stage frontal airbags; side impact chest airbag; side impact head airbag; front seatbelt pretensioners; front and rear seatbelt load-limiters; ISOFIX and top-tether anchorages in rear outboard seats; front and rear seatbelt reminder system; speed limitation device; electronic stability control



Peugeot 3008

COMMENTS	
ADULT OCCUPANT	The passenger compartment remained stable in the frontal impact and the protection offered to both driver and passenger was rated predominantly good. However, the passenger airbag was found to have been torn slightly during deployment, allowing it to vent in a way other than designed. Peugeot attributed the tear to incorrect splitting of the airbag cover in the dashboard and an improved design is now in production. Peugeot's tests indicated that the tear would not have influenced the characteristics of the airbag and that the protection offered was unaffected. Dummy readings indicated good protection of the knees and femurs and Peugeot showed that similar protection was provided to occupants of different sizes or those sat in different positions. Maximum points were scored in the side barrier impact but protection of the chest was marginal in the side pole test. Protection against whiplash injuries was also marginal, the car scoring no points in the most severe of the three whiplash tests.
CHILD PROTECTION	Forward movement of the 3 year old in the frontal test was not excessive. The passenger airbag can be disabled to allow a rearward-facing child restraint to be used in that seating position. However, information provided to the driver regarding the status of the airbag is not sufficiently clear.
PEDESTRIAN PROTECTION	The bonnet provided poor protection in all areas which might be struck by an adult's head. For a child's head, the protection offered was predominantly poor but was good in some areas towards the centre of the bonnet. The bumper provided good protection to pedestrians' legs.
SAFETY ASSIST	Electronic stability control is fitted as standard equipment, as is a seatbelt reminder system for both front and rear seats. A speed limitation device is standard on some variants and optional on others.

Euro NCAP's rating applies fully only to the model with the specifications detailed here. Some equipment may not be fitted as standard to all versions in all countries. You should ensure that your car is fitted with the safety equipment you require.

