

CITROEN C3 Picasso

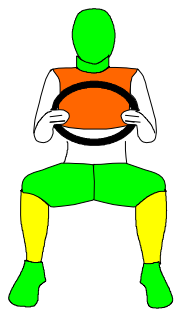


2009

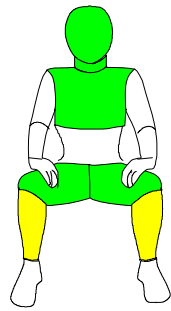
	Adult Occupant	Child Occupant	Pedestrian	Safety Assist	
Score	29.071	37.000	15.634	2.800	
Max Points available	36	49	36	7	
Normalised Score (%)	81	76	43	40	
Weighting (%)	50	20	20	10	TOTAL
Weighted Percentage Score	40.5	15.2	8.6	4.0	

Rating Requirements (2009)

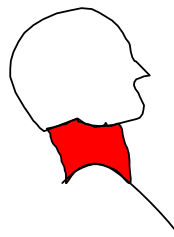
	Normalised Score (%)				TOTAL
★★★★★	75	70	25	60	70
★★★★	60	55	15	40	55
★★★	30	30	10	25	45
★★	25	25	5	15	35
★	15	15	0	5	20



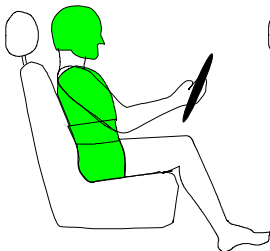
Driver



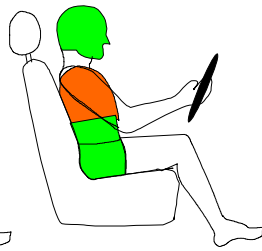
Passenger



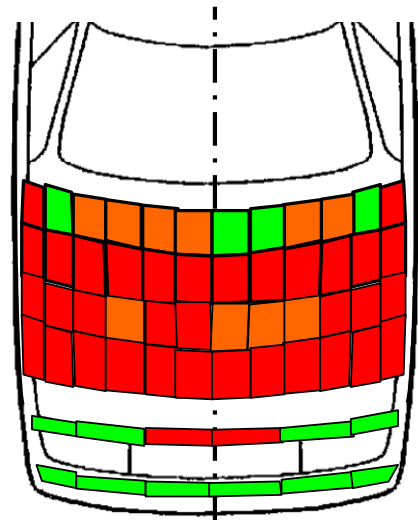
Rear Impact (Whiplash)



Side

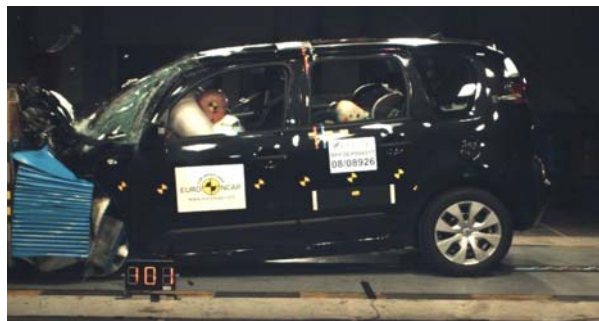


Pole



TEST RESULTS IN FULL	
FRONTAL IMPACT HEAD	
Driver airbag contact	stable
Passenger airbag contact	stable
Steering Wheel	
rearward displacement	none
upward displacement	none
lateral displacement	5mm to the left
FRONTAL IMPACT CHEST	
Contact with steering wheel	yes
Screen pillar rearward	32mm
Passenger compartment integrity	stable
FRONTAL IMPACT UPPER LEGS, KNEES AND PELVIS	
Stiffer structures present	none
Concentrated knee loading	none
FRONTAL IMPACT LOWER LEGS, FEET AND ANKLES	
Rearward pedal displacement	clutch - 25mm
Upward pedal displacement	none
Footwell rupture	none
SIDE IMPACT AIRBAGS	
Head protection airbag	yes
Torso protection airbag	yes
CHILD PROTECTION	
Restraints used	
18 month old	Britax Romer Duo, forward facing using ISOFIX anchorages
3 year old	Britax Romer Duo, forward facing using ISOFIX anchorages
CHILD RESTRAINTS FRONTAL IMPACT	
Airbag disabling/warning label	Text warning label permanently attached to both sides of the passenger sunvisor.
Forward head movement	
18 mth old (behind passenger)	protected
3 year old (behind driver)	protected
Chest Protection	
18 mth old: total load	good
vertical load	good
3-year-old: total load	good
vertical load	good
CHILD RESTRAINTS SIDE IMPACT	
Head protection	
18 mth old (struck side)	protected
3 year old (non-struck side)	protected
Head acceleration	
18 mth old	good
3 year old	good

CAR TESTED



Make, model and hand of drive	Citroen C3 Picasso Confort HDi 90
Body type	5 door MPV
Year tested	2009
Kerb weight	1289kg
Chassis number from which Euro NCAP rating applies	applies to all C3 Picassos
Safety Equipment	Driver and passenger single stage frontal airbags; side impact chest airbag; side impact head airbag; front seatbelt double pretensioners and load-limiters; rear seatbelt load limiters; ISOFIX and top-tether anchorages in rear outboard seats; speed limitation device; driver and passenger seatbelt reminder.



Citroen C3 Picasso

COMMENTS

ADULT OCCUPANT	The passenger compartment remained stable in the frontal impact. Readings from the driver dummy's chest indicated a contact with the steering wheel and the car was penalised by one point. Protection of the knees, femurs and pelvis was good for both the driver and passenger. The car scored maximum points in side barrier impact. In the side pole test, protection of the chest was rated as marginal owing to the extent of rib deflection recorded by the dummy. Whiplash protection was poor, the seat scoring no points in two of the three dynamic tests and losing points for the poor position of the restraint when unadjusted (fully down and back).
CHILD PROTECTION	Based only on the dummy responses in the tests, the car scored maximum points for protection of the 3 year infant. For the 1½ year old, Euro NCAP awards fewer points for a forward facing restraint than for a rearward facing one but the dummy readings were all good. The passenger airbag can be disabled to allow a rearward facing child restraint to be used in that seating position. However, information provided to the driver regarding the status of the airbag is not sufficiently clear. The presence of ISOFIX anchorages in the rear outboard seats was not clearly marked.
PEDESTRIAN PROTECTION	The car scored maximum points for the protection offered by the bumper. However, poor head protection was provided over most of the bonnet surface.
SAFETY ASSIST	ESC is available on the C3 Picasso but it is not standard equipment on all variants. The star rating reflects a car without ESC as sales of the system are not expected to reach Euro NCAP's requirements. A driver-set speed limitation device is also available as standard or as an option. As Citroen expect to sell most vehicles with the limiter as standard equipment, its score has been included in the overall rating. The device allows drivers to set a speed to which the vehicle will then be limited. A seatbelt reminder is standard equipment for the driver's seat and standard or optional for the passenger and rear seats. Sales of the passenger SBR are expected to reach Euro NCAP's requirements; sales of the rear seat system will not. Therefore, the overall rating incorporates the scores from the driver and passenger systems.

Euro NCAP's rating applies fully only to the model with the specifications detailed here. Some equipment may not be fitted as standard to all versions in all countries. You should ensure that your car is fitted with the safety equipment you require.



EUROPEAN NEW CAR
ASSESSMENT PROGRAMME