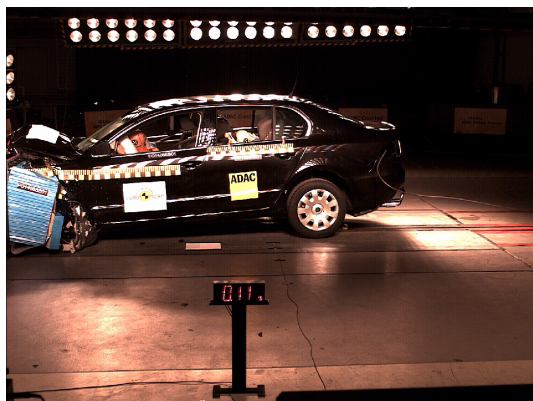


TEST RESULTS

Skoda Superb

Skoda Superb 2.0TDI 'Ambition', LHD

2009 ★★★★★



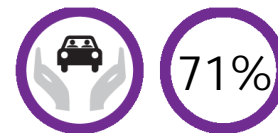
ADULT OCCUPANT



CHILD OCCUPANT



PEDESTRIAN



SAFETY ASSIST

ADULT OCCUPANT

Total 32 pts | 90%

FRONTAL IMPACT

14,8 pts



Driver



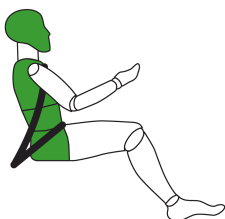
Passenger

SIDE IMPACT CAR

8 pts

SIDE IMPACT POLE

7,3 pts



Car



Pole

REAR IMPACT (WHIPLASH)

2,2 pts



- GOOD
- ADEQUATE
- MARGINAL
- WEAK
- POOR

FRONTAL IMPACT

HEAD

Driver airbag contact	stable
Passenger airbag contact	stable

CHEST

Passenger compartment	stable
Windscreen Pillar rearward	3mm
Steering wheel rearward	none
Steering wheel upward	none
Chest contact with steering wheel	none

UPPER LEGS, KNEES AND PELVIS

Stiff structures in dashboard	none
Concentrated loads on knees	none

LOWER LEGS AND FEET

Footwell Collapse	none
Rearward pedal movement	brake - 7mm
Upward pedal movement	none

SIDE IMPACT

Head protection airbag	Yes
Chest protection airbag	Yes

WHIPLASH

Seat description	
Head restraint type	
Geometric assessment	0,7 pts

TESTS

- High severity	2,4 pts
- Medium severity	1,3 pts
- Low severity	1,7 pts

TEST RESULTS

CHILD OCCUPANT

Total 40 pts | 81%

18 MONTH OLD CHILD

Restraint Fair G0/1 ISOFIX
Group 0, 0+, 1
Facing rearward
Installation ISOFIX anchorages and support frame



PERFORMANCE **12 pts**
 INSTRUCTIONS **4 pts**
 INSTALLATION **2 pts**

FRONTAL IMPACT

Head forward movement protected
Head acceleration good
Chest load good

SIDE IMPACT

Head containment protected
Head acceleration good

3 YEAR OLD CHILD

Restraint Fair G0/1 ISOFIX
Group 0, 0+, 1
Facing forward
Installation ISOFIX anchorages and support frame



PERFORMANCE **11,6 pts**
 INSTRUCTIONS **4 pts**
 INSTALLATION **2 pts**

FRONTAL IMPACT

Head forward movement protected
Head acceleration good
Chest load fair

SIDE IMPACT

Head containment protected
Head acceleration good

VEHICLE BASED ASSESSMENT

4 pts

Airbag warning Label

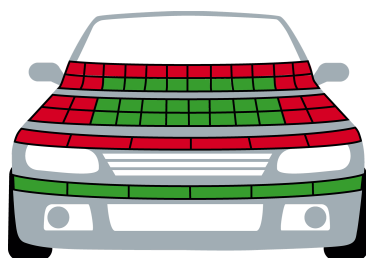
Non-permanent pictogram warning label at base of B-pillar.

PEDESTRIAN

Total 18 pts | 50%

SAFETY ASSIST

Total 5 pts | 71%



GOOD
MARGINAL
POOR

HEAD 12 pts
PELVIS 0 pts
LEG 6 pts

SPEED LIMITATION ASSISTANCE

0 pts

- 0, not available

ELECTRONIC STABILITY CONTROL (ESC)

3 pts

- standard

SEATBELT REMINDER

2 pts

- driver 1 pts
 - passenger 1 pts

DETAILS OF TESTED CAR

SPECIFICATIONS

Tested model	Skoda Superb 2.0TDI 'Ambition', LHD
Body type	5 door saloon
Year of publication	2009
Kerb weight	1490kg
VIN from which rating applies	applies to all Superbs

SAFETY EQUIPMENT

Front seatbelt pretensioners	
Front seatbelt load limiters	
Driver frontal airbag	single stage
Front passenger frontal airbag	single stage
Side body airbags	
Side head airbags	curtain
Driver knee airbag	

COMMENTS

Adult occupant

The passenger compartment remained stable in the impact. Dummy readings indicated good protection of the front seat passengers' knees and femurs. Skoda showed Euro NCAP that occupants of different sizes, or those sat in different seating positions, would be equally well protected.

The Superb scored maximum points for its performance in the side impact test. Protection of the neck against whiplash injury was rated as marginal.

Child occupant

Based on dummy responses in the dynamic tests, the Superb scored maximum points for its protection of the 1½ year dummy. The passenger airbag can be disabled to allow a rearward facing child restraint to be used in that seating position. However, information provided to the driver regarding the status of the airbag is not sufficiently clear. There was no adequate warning of the dangers of using a rearward facing child restraint without first deactivating the airbag. The presence of ISOFIX and top-tether anchorages in the rear outboard seats was not clearly marked.

Pedestrian

The bumper scored maximum points for the protection offered to pedestrians' legs. The bonnet surface provided mostly fair protection in the area where a child's head might hit. However, the bonnet was rated as predominantly poor for the protection offered to an adult's head and the front edge of the bonnet scored no points.

Safety assist

Electronic Stability Control is standard equipment on all Superbs in the model range. Both front seats have a seatbelt reminder system which met Euro NCAP's requirements.