

## Satellite terminal facts and figures

**609** meters long, **53** meters wide  
**11** million additional passengers per year  
**40%** lower CO<sub>2</sub> emissions than Terminals 1 and 2  
**5** modern lounges spanning **4,100 m<sup>2</sup>**  
**2** Lufthansa Service Centers with transfer machines  
**42** passport checkpoints

**10,900**  
**passengers**  
 an hour can be transported in each direction on the three "miniature subway" APM trains.

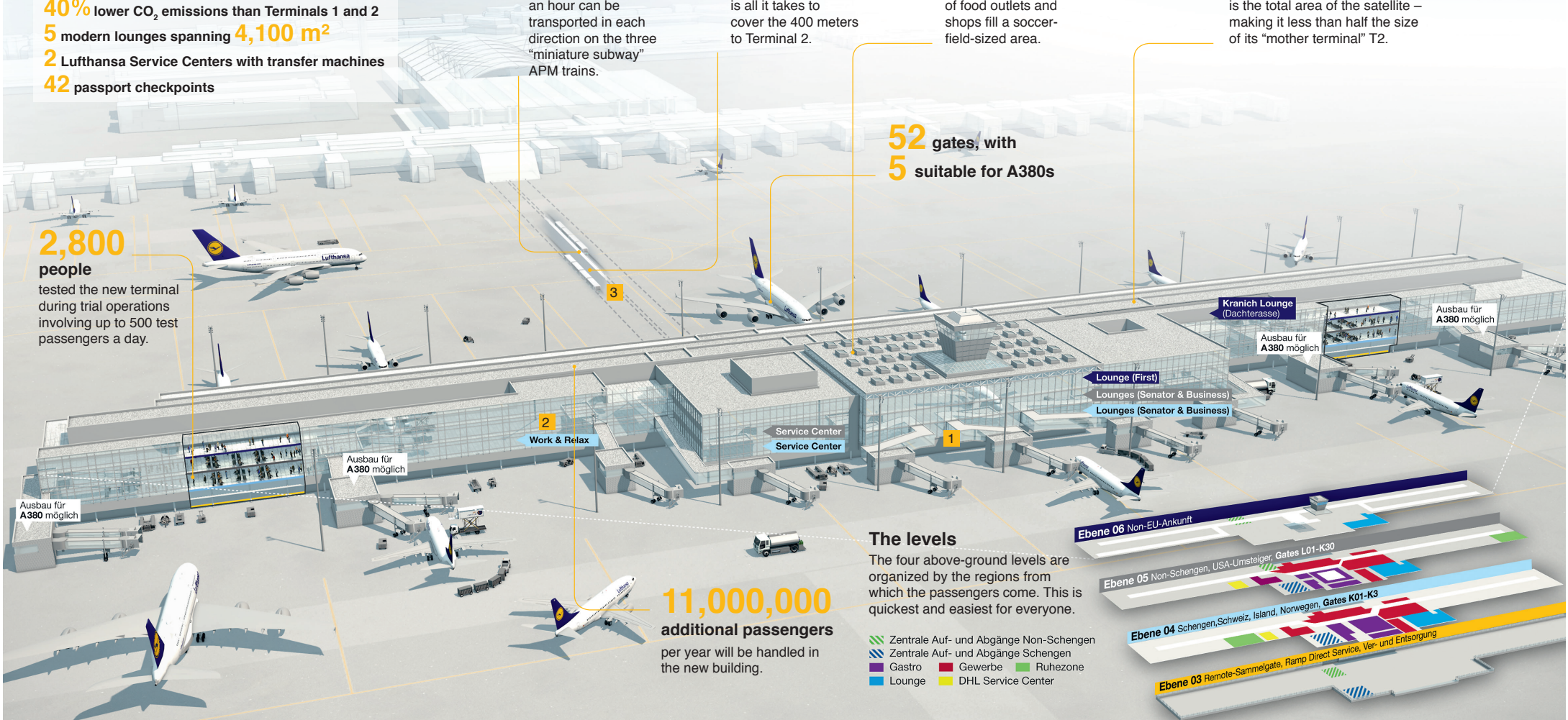
**60**  
**seconds**  
 is all it takes to cover the 400 meters to Terminal 2.

**7,000**  
**square meters**  
 of food outlets and shops fill a soccer-field-sized area.

**125,000**  
**square meters**  
 is the total area of the satellite – making it less than half the size of its "mother terminal" T2.

**2,800**  
**people**  
 tested the new terminal during trial operations involving up to 500 test passengers a day.

**52** gates, with  
**5** suitable for A380s



Ausbau für A380 möglich

Ausbau für A380 möglich

Work & Relax

Service Center  
 Service Center

Lounge (First)  
 Lounges (Senator & Business)  
 Lounges (Senator & Business)

Kranich Lounge (Dachterasse)

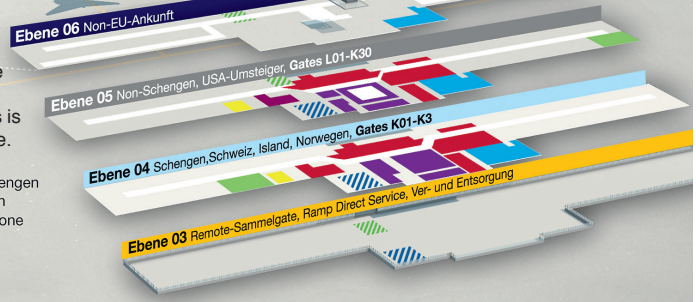
Ausbau für A380 möglich

Ausbau für A380 möglich

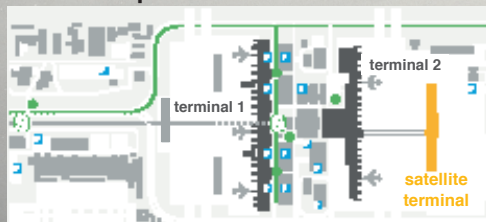
**The levels**  
 The four above-ground levels are organized by the regions from which the passengers come. This is quickest and easiest for everyone.

- Zentrale Auf- und Abgänge Non-Schengen
- Zentrale Auf- und Abgänge Schengen
- Gastro ■ Gewerbe ■ Ruhezone
- Lounge ■ DHL Service Center

**11,000,000**  
**additional passengers**  
 per year will be handled in the new building.



## Munich Airport



**1** Great variety: The central marketplace surrounds the integrated control tower and provides an array of Bavarian and international shops and restaurants.



**2** Great comfort: The satellite offers modern services, such as cozy relaxation areas (pictured), showers and diaper-changing tables in both the male and female lavatories.



**3** Great speed: The automated people mover (APM) connects the satellite with Terminal 2 via two 400-meter-long underground tunnels with a journey time of just one minute.