

## Fulda Kristall Control HP2: outstanding performance in winter conditions

**Brussels, June 2016** – Fulda has developed a new high-performance winter tire for high-performance vehicles: the Kristall Control HP2. A multitude of modern technologies in the Fulda Kristall Control HP2 have been combined to create a tire that drivers can count on in winter conditions. It will be available in 35 sizes as of autumn of this year.

### “Snow Catcher Technology” for improved traction

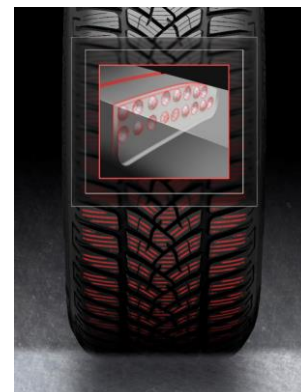


**SNOW CATCHER**  
TECHNOLOGY

The Kristall Control HP2 uses “Snow Catcher Technology”, which works according to the principle that nothing sticks to snow better than snow itself. Profile grooves are arranged closely together to ensure that the snow stays within the tread profile and is heavily compressed. Overall, this leads to improved traction on snow.

### 3D “Bubble Blades” sipe technology for optimal balance

The 3D Bubble Blades sipe technology in the Kristall Control HP2 provides a good balance between grip and traction on snow and ice, and the necessary driving stability for excellent handling and braking performance. The sipes are fine slits in the tread blocks that grip the surface as the tires roll. The new Fulda winter tires have a large number of sipes and can therefore create many biting edges to enhance grip on snow.



In addition, the sipes have a self-locking effect. The “Bubble Blades” sipes have a rounded projection in their center. Thanks to this profile design, the sipes support one another under strong forces - for instance, when braking or taking corners on a dry

road surface. This gives the tread blocks the necessary stability to produce excellent braking and handling characteristics as well as accurate steering behavior.

### Innovative tread compound and optimal profile design



The Kristall Control HP2 has a full silica tread compound, which gives the tire grip at lower temperatures, thus ensuring better driving control in wintry conditions. The Fulda Kristall Control HP2 is not only outstanding in terms of its winter handling characteristics - it is also impressive in terms of its mileage. Thanks to the tire's flat and wide contact patch, more rubber is in contact with the road surface. This means that there is an even distribution of pressure on the contact patch, resulting in better mileage.

The Kristall Control HP2 will be available as of autumn 2016 in 35 sizes, with widths ranging from 195 to 245 millimeters, rim diameters from 15 to 18 inches, and aspect ratios from 40 to 65.

### Complete list of sizes:

195/55 R15 85H	215/45 R17 91V	215/55 R16 93H
245/40 R18 97V	215/50 R17 95V	245/45 R18 100V
225/50 R17 98 XL	225/40 R18 92V	195/55 R16 87H
225/50 R17 98 H XL	225/45 R18 95V	205/60 R16 96H
215/55 R16 97H	225/55 R16 95H	215/55 R17 98V
225/45 R17 91H	225/55 R17 101V	195/55 R16 87T
235/60 R16 100H	225/60 R16 102V	205/65 R15 94T
195/50 R15 82H	235/45 R17 97V	205/65 R15 94H
195/65 R15 91H	235/50 R18 101V	215/60 R16 99H
205/50 R17 93V	245/45 R17 99V	215/65 R15 96H
205/55 R16 91V	215/65 R16 98H	205/60 R16 92H
205/55 R16 94 V	225/45 R17 94V	