

PORSCHE DESIGN  
SPORT



FALL / WINTER 2016



## ENGINEERING PERFORMANCE

Inspired by urban adventure, physical dominance and extreme conditions, the Fall/Winter 2016 collection is engineered to bring comfort and style to enduring the toughest climates. Motivated by innovative function and unique style, Porsche Design Sport by adidas present practical and stylish solutions for the urban sportsman this season across multiple sportswear categories including Running, Gym, Elements and Driving.

Two new stand-out patterns - Glacier Camou and Reflective accents - fused with ground-breaking technology deliver exceptional performance and unprecedented style.



- AX6168 | INSULATION PRINT VEST
- AX5954 | KNIT JUMPER
- AX6106 | RUN TEE
- AX6047 | SWEAT PANTS
- AQ1597 | ECRUNNING
- AX5482 | BS TEAMBAG S
- AX5478 | WINTER BEANIE

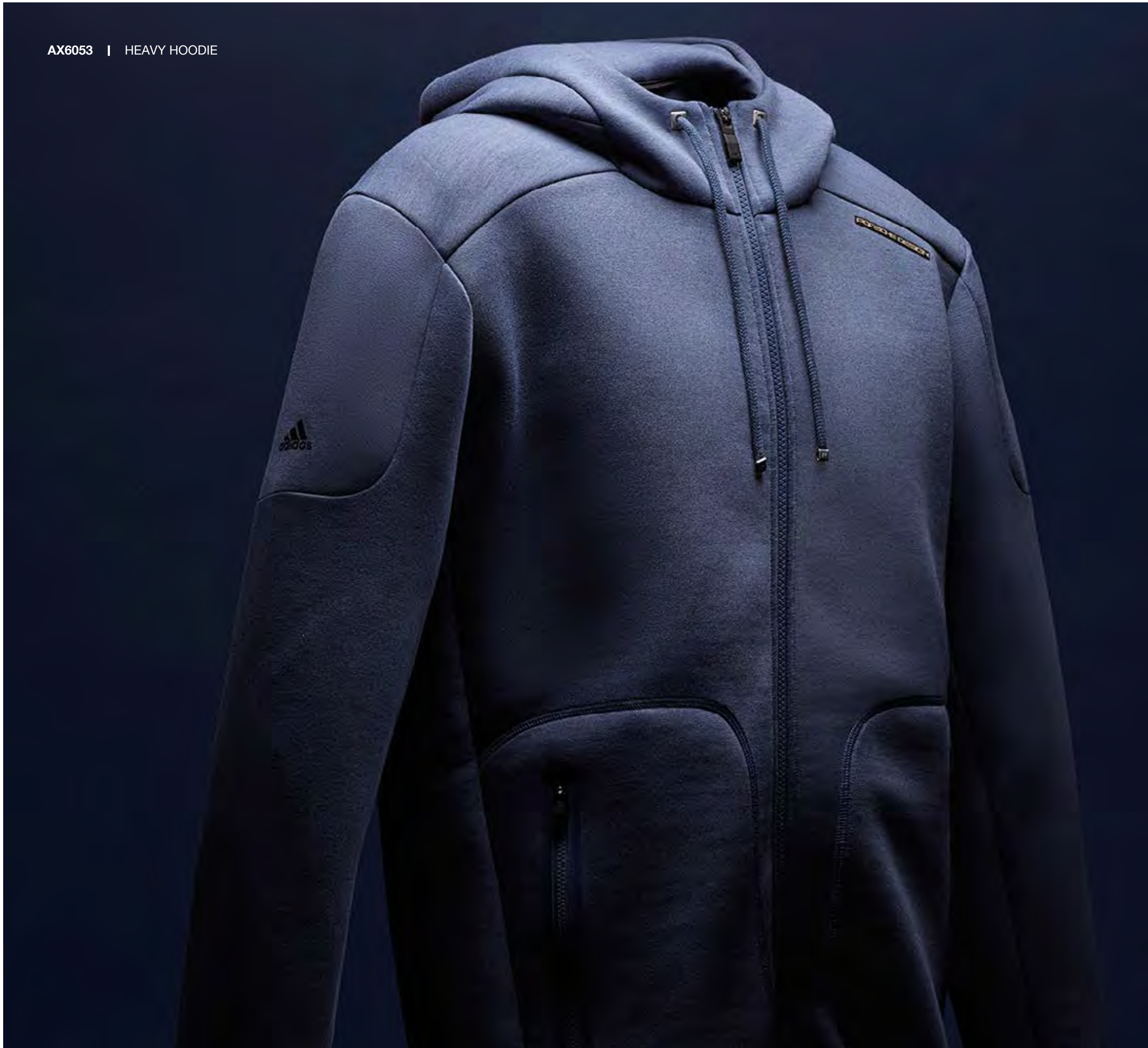




AX6053 | HEAVY HOODIE  
AX5900 | CORE TEE  
AX6165 | INSULATION VEST  
AX6045 | SWEAT PANTS  
AX5481 | BS BACKPACK



AX6053 | HEAVY HOODIE



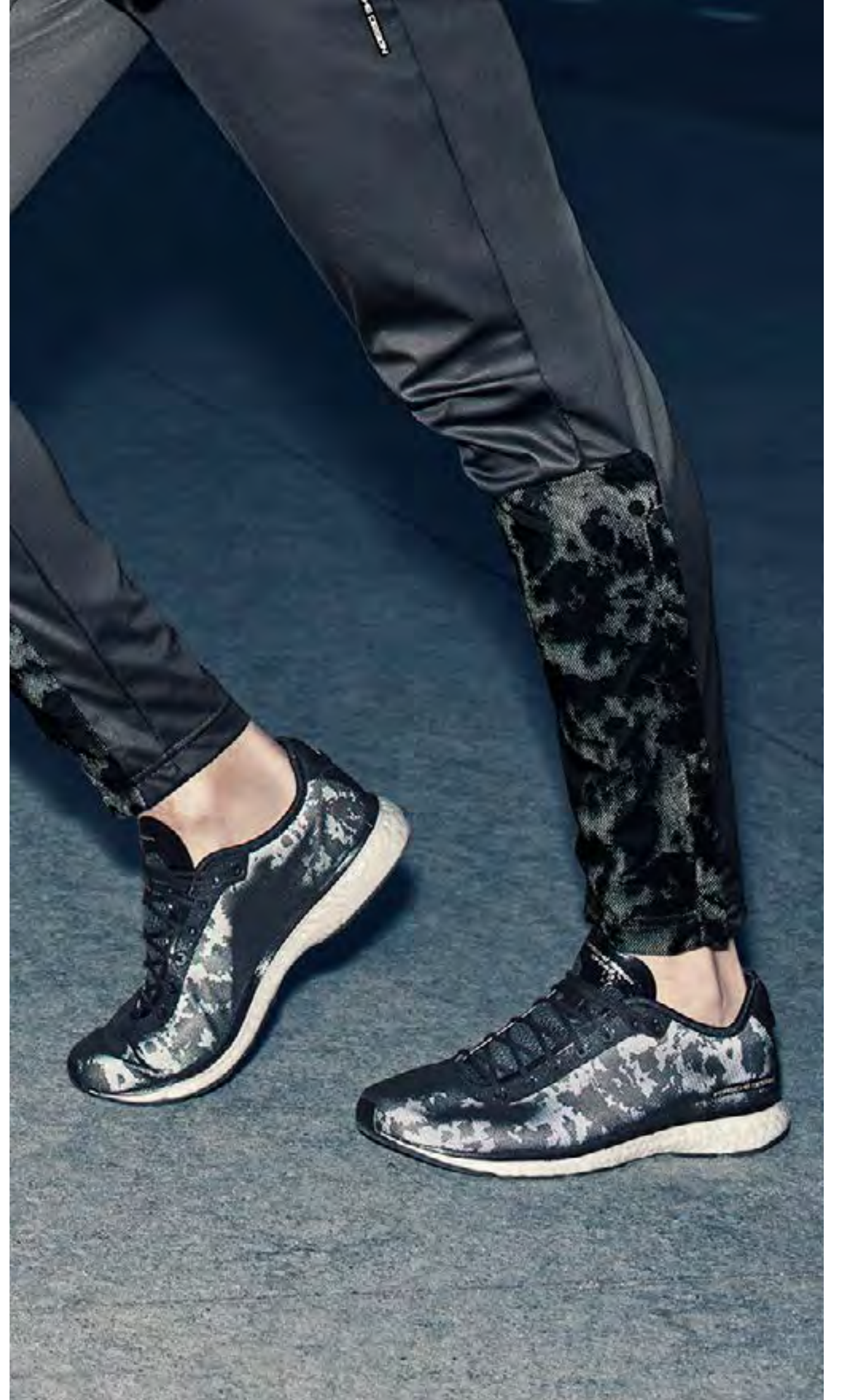


AQ1594 | PDS TUNED ULTRA BOOST



AX6111 REFLECTIVE RUN VEST  
AX6110 TECH WOOL LS TEE  
AX6125 TRACKSTAR PANT  
AQ3577 ENDURANCE  
AX5479 FUNCTIONAL CAP





AX6124 REFLECTIVE LIGHT RUN JACKET  
AX6067 ODT TEE  
AX6073 ODT SHORTS  
AX5481 BS BACKPACK





AX6124 | REFLECTIVE LIGHT RUN JACKET  
AQ3573 | PDS ULTRA BOOST TRAINER  
AQ3572 | PDS ULTRA BOOST TRAINER



**AX6147**  
**AX6013**  
**AI1597**  
**AX6032**  
**AQ3567**

DOWN JACKET  
TECH WOOL TOP  
PIQUE POLO SHIRT  
FUNCTIONAL PANTS  
DAILY TOURER

AQ3567 | DAILY TOURER





<b>AX6143</b>	DOWN VEST
<b>AX5955</b>	KNIT JUMPER
<b>AX5905</b>	CORE TEE
<b>AX5988</b>	TRAVEL PANTS
<b>AQ3580</b>	BOUNCE™:S⁴ 2.0
<b>AX5476</b>	WOOLIE



AX6170  
AZ8751  
AX6035

HOODED DOWN JACKET  
SWEAT HOODIE  
FAIRWAY PANTS



AQ3563 | INTERMEDIATE 2





AX6148 | FUNCTIONAL DOWN JACKET  
AX6014 | TECH WOOL TOP  
AX6031 | FUNCTIONAL PANTS  
AX5489 | CARGO BACKPACK



AX5489 | CARGO BACKPACK



AX6152 | DOWN COAT





- AX5982 TRAVEL COAT
- AX6163 INSULATION PRINT JACKET
- AX5900 CORE TEE
- AX6036 FAIRWAY PANTS
- AQ1594 PDS TUNED ULTRA BOOST
- AX5472 DRIVE TOTE BAG
- AX5477 WINTER BEANIE



AX6069 ODT TECH FLEECE  
AX6066 ODT TEE  
AX6071 ODT TIGHT  
AX6072 ODT SHORTS  
AQ3565 WINTER TRAINER  
AX5487 ODT BEANIE  
AX5486 ODT GLOVES





- AX6069 ODT TECH FLEECE
- AX6066 ODT TEE
- AX6071 ODT TIGHT
- AX6072 ODT SHORTS
- AQ3565 WINTER TRAINER
- AX5487 ODT BEANIE
- AX5486 ODT GLOVES





<b>AX6139</b>	SPACER MESH JACKET
<b>AX6108</b>	TECH WOOL TEE
<b>AX6031</b>	FUNCTIONAL PANTS
<b>AQ3561</b>	SNOW WINTER BOOT 3

AX6139 | SPACE MESH JACKET  
AX6108 | TECH WOOL TEE





**FOOTWEAR**





**ENDURANCE LEATHER**  
AF4417



**ENDURANCE**  
AQ3577



**PDS ULTRA BOOST TRAINER**  
AQ3572



**PDS ULTRA BOOST TRAINER**  
AQ3573



**PDS TUNED ULTRA BOOST**  
AQ1594



**SNOW WINTER BOOT 3**  
AQ3561



**ATHLETIC SPORT**  
AQ3574



**INTERMEDIATE 2**  
AQ3563



**DAILY TOURER**  
AQ3567



**WINTER TRAINER**  
AQ3565



**ATHLETIC 3 LEATHER**  
B34158



**ATHLETIC 3 MESH**  
AQ3570



**EC RUNNING**  
AQ1596



**EC RUNNING**  
AQ1597



**EASY TRAINER 4**  
AQ3578



**EASY TRAINER 4**  
AQ3579



**BOUNCE™: S<sup>4</sup> 2.0**  
AQ3581



**BOUNCE™: S<sup>4</sup> LEATHER**  
AQ3582



**BOUNCE™: S<sup>4</sup> 2.0**  
AQ3580



**BOUNCE™: S<sup>4</sup> 2.0**  
AQ4164



**BOUNCE™: S' STYLE 2**  
AQ3585



**BOUNCE™: S' STYLE 2**  
AQ3584

A low-angle photograph of three skyscrapers against a pale sky. The word 'APPAREL' is centered in the sky. The buildings are modern, with glass facades and grid patterns. The sky is a uniform, light beige color. The word 'APPAREL' is written in a bold, black, sans-serif font, centered horizontally and vertically in the sky area.

APPAREL



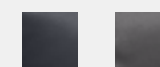
**FUNCTIONAL DOWN JACKET**  
AX6148 / AX6149



**CASUAL DOWN COAT**  
AX6154



**HOODED DOWN JACKET**  
AX6171 / AX6170 / AX6169



**DOWN COAT**  
AX6152 / AX6153







**INSULATION JACKET**  
AX6162 / AX6161



**INSULATION VEST**  
AX6165 / AX6166



**INSULATION PRINT JACKET**  
AX6163



**INSULATION PRINT VEST**  
AX6168 / AX6167





**REFLECTIVE RUN VEST**  
AX6112 / AX6111



**REFLECTIVE RUN JACKET**  
AX6114 / AX6113



**REFLECTIVE LIGHT RUN JACKET**  
AX6122 / AX6124



**BS JACKET**  
AX6127 / AX6129





**SPACER MESH JACKET**  
AX6140 / AX6139



**DOWN VEST**  
AX6143 / AX6142



**SOFT SHELL JACKET**  
AX6144 / AX6145



**DOWN JACKET**  
AX6146 / AX6147





**AVALANCHE JACKET**  
AX6174 / AX6173



**TRAVEL COAT**  
AX5982



**FUNCTIONAL RAIN JACKET**  
AX6038 / AX6037



**SWEAT JACKET**  
AX6044 / AX6042 / AX6043





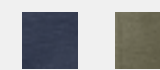
**TECH WOOL TOP**  
AX6014 / AX6013



**CREW SWEAT TOP**  
AX6050 / AX6051



**HEAVY HOODIE**  
AX6055 / AX6053 / AX6054



**SWEAT HOODIE**  
AZ8751 / AZ8752





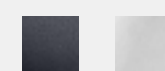
**KNIT JUMPER**  
AX5955 / AX5954



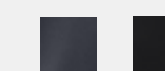
**LS PIQUE POLO**  
AX5997 / AX5995 / AX5996



**PIQUE POLO SHIRT**  
AI1600 / AI1595 / AI1597



**RACING POLO**  
AX5907 / AX5908 / AX5906





**TRAINING SUIT TOP**  
AX6059 / AX6060



**RUN TEE**  
AX6103 / AX6104 / AX6105 / AX6106



**TECH WOOL TEE**  
AX6108 / AX6107



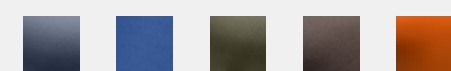
**TECH WOOL LS TEE**  
AX6109 / AX6110





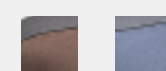
**PIQUE POLO SHIRT**

AX6020 / AX6016 / AX6017 / AX6018  
/ AX6019 / AX6021



**COLORBLOCK PIQUE POLO**

AX6026 / AX6025 / AX6027



**CORE TEE**

AX5902 / AX5899 / AX5900 / AX5901  
/ AX5903 / AX5904 / AX5905



**ACTIVITY TEE**

AX6039 / AX6040 / AX6041







**TRAVEL PANTS**  
AX5988



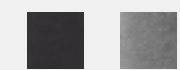
**FAIRWAY PANTS**  
AX6035 / AX6036



**FUNCTIONAL PANTS**  
AX6032 / AX6031



**SWEAT PANTS**  
AX6046 / AX6045 / AX6047





**TRACKSTAR PANTS**  
AX6125



**TRAINING SUIT PANTS**  
AX6060 / AX6059



**LONG TRAINING PANTS**  
AX6064 / AX6065



**BS PANTS**  
AX6132 / AX6130





**SKI PANTS**  
AX6150 / AX6151



**SPA SHORTS**  
AX6056 / AX6057 / AX6058



**BS SHORTS**  
AX6134 / AX6133



**SWEAT SHORTS**  
AX6049 / AX6048





**ACCESSORIES**



**DRIVE TEAM BAG**  
AX5474



**BS TEAM BAG S**  
AX5482



**BS TEAM BAG M**  
AX5483



**DRIVE ORGANIZER**  
AX5471



**DRIVE TOTE BAG**  
AX5472



**DRIVE BACKPACK**  
AX5473



**FOOTBALL BAG**  
AI3638



**CARGO BACKPACK**  
AX5489



**CARGO TEAMBAG**  
AX5490



**LUX GLOVES**  
AX5475



**BS BACKPACK**  
AX5481



**HOOK BELT**  
AI3680 / AX5492







**CREW SOCKS**  
AI3654 / AI3655



**LINER SOCKS**  
AI3668 / AI3669



**GYM TOWEL**  
AX5484



**WINTER BEANIE**  
AX5478 / AX5477



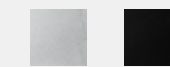
**WOOLIE**  
AX5476



**FUNCTIONAL CAP**  
AX5479



**CLASSIC CAP 2**  
AI3653 / AI3643 / AI4961



## PRESS CONTACTS

### GLOBAL

KATHRIN BUCHERT  
KATHRIN.BUCHERT@ADIDAS.COM  
TELEPHONE: +49 9132 84 6073

### RUSSIA / CIS

VALERIYA VAGANOVA  
VALERIYA.VAGANOVA@ADIDAS-GROUP.COM  
TELEPHONE: +7 495 981 655

### GERMANY

SIMONA SCHAPIRO  
SIMONA.SCHAPIRO@MCSAATCHI.DE  
TELEPHONE: +49 (0) 30 609 60 00-71

### USA

FRANK CLYBURN  
FRANK.CLYBURN@ADIDAS.COM  
TELEPHONE: +1 212-352-6131

### UK

ABIGAIL BECK  
ABIGAIL.BECK@ADIDAS.COM  
TELEPHONE: +22 (0) 20 7670 2700

### PORSCHE DESIGN GROUP

NADINE CORNEHL  
NADINE.CORNEHL@PORSCHE-DESIGN.DE  
TELEPHONE: +49 711 911 12919

© 2016 Porsche Design.

Porsche Design is a registered trademark of Dr. ing. h.c. f. Porsche AG.  
adidas and the Badge of Sport logo are registered trademarks of the adidas Group.